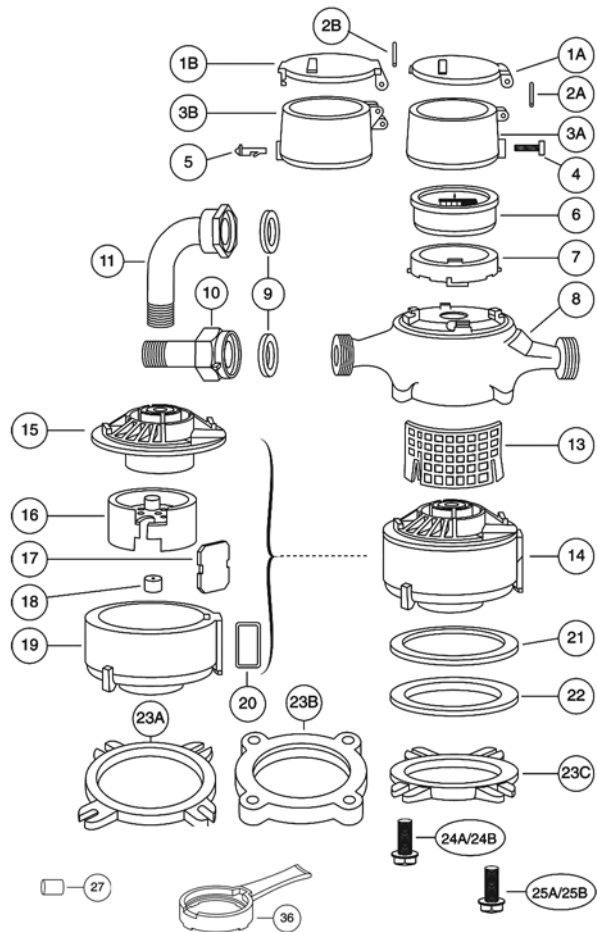


Water Meters, Systems & Accessories H-7

Sensus SR II® Meter Parts

5/8" thru 1" SR II Water Meters

ILL. NO.	PART DESCRIPTION	PRODUCT NUMBER		
		METER SIZE		
		5/8" & 3/4" x 3/4"	3/4"	1"
1A	Register Lid - Bronze (1)	50616	50616	50616
1B	Register Lid - Plastic (1)	50616 1	50616 1	50616 1
2A	Hinge Pin for Metal Lid (1)	50616 2	50616 2	50616 2
2B	Hinge Pin for Plastic Lid (1)	50616 3	50616 3	50616 3
3A	Register Bonnet - Bronze (1)	50616 4	50616 4	50616 4
3B	Register Bonnet - Plastic Screw (1)	50616 5	50616 5	50616 5
3C	Register Bonnet - Plastic Pin (1)			
4	Tamper Resistant Screw (4)	50616 6	50616 6	50616 6
5	Tamper Detection Pin (2)	50616 7	50616 7	50616 7
6	Sealed Register (5)	*	*	*
7	Register Retaining Ring	50616 10	50616 10	50616 10
8	Maincase (3)	50616 11	50718 11	50810 13
9	Connection Gasket - Leather			
10	Connection - Straight 1/2 Set	These parts sold separately. See meter brass later in the section.		
11	Connection - Bent 1/2 Set			
13	Strainer	50616 12	50718 12	50810 14
14	Measuring Chamber, Complete, Tested (Rocksyn™)	50616 13	50718 13	50810 15
15	Measuring Chamber Top Rock Assembly with Drive Dog and Magnet (Rocksyn™) (6)	50616 14	50718 14	50810 16
16	Piston (6)	50616 15	50718 15	50810 17
17	Division Plate (6)	50616 16	50718 16	50810 18
18	Control Roller (6)	50616 17	50718 17	50810 19
19	Measuring Chamber Bottom w/Pin (Rocksyn™) (6)	50616 18	50718 18	50810 20
20	Measuring Chamber Outlet Gasket	50616 19	50718 19	50810 21
21	Bottom Plate Gasket	50616 20	50718 20	50810 22
22	Bottom Plate Liner	50616 21	50718 21	50810 23
23A	Bottom Plate - Cast Iron	50616 22	50718 22	50810 1
23B	Bottom Plate - Plastic	50616 23	50718 23	50810 27
23C	Bottom Plate - Bronze	50616 24	50718 24	50810 24
24A	Maincase Cap Screw - Stainless, Washerhead	50616 25	50718 25	50810 25
24B	Maincase Cap Screw -Stainless, Washerhead-Drilled	50616 ??	50718 ??	50810 ??
25A	Maincase Cap Screw -Bronze, Washerhead	50616 26	50718 26	50810 26
25B	Maincase Cap Screw -Bronze-Drilled, Washerhead-Drilled	50616 ??	50718 ??	50810 ??



- Bronze Lids must be used with Bronze Bonnets and Plastic Lids with Plastic Bonnets.
- Can be used only with Plastic Register Bonnet.
- Specify Spud size by letter designation:
A. 5/8"; B. 3/4" x 3/4"; C. 3/4"; D. 3/4" x 1"; E. 1"; F. 1" x 1 1/4"
For 3/4" Maincase specify 9" or 7 1/2" laying length; 7 1/2" length is available only with 3/4" spud.
- Requires a 1/4" drive tool (not supplied) for use with Ill. #4
- Specify registration by letter designation:
A. U.S. Gallons; B. Cubic Feet; C. Cubic Meters; D. Other
- Included in measuring chamber complete. (Ill. #14)

ILL. NO.	DESCRIPTION	PRODUCT NUMBER
27	1/4" Drive Security Socket	50537
36	SRII Wrench	50616 36

NOTE: For additional meter accessories please refer to page H-4.