

Couplings and Fittings for Certa-Lok™ Yelomine™ Pipe

Certa-Lok™ fittings, like the pipe, provide the simplicity and integrity of the Certa-Lok™ joint. Adaptors allow easy connections to other piping materials and joints.

All Yelomine™ fittings are compatible with respect to chemical resistance and pressure ratings with Yelomine™ pipe (see Section A). Spline couplings are as strong as the pipe with respect to both internal pressure and axial forces resulting from internal pressure.

Definitions & Abbreviations

- C/L..... Certa-Lok
- C/LF Certa-Lok Gasketed (female)
- C/LM.... Certa-Lok Grooved (male) Pipe End
- MIPT IPS (male) pipe thread (NPT)
- FIPT IPS (female) pipe thread (NPT)
- SWSolvent Weld
- PEPlain End
- BE.....Bell End

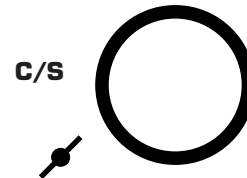
Splines



DESCRIPTION	PRODUCT NUMBER
2" Certa-Lok Spline	23044
3" Certa-Lok Spline	23134
4" Certa-Lok Spline	23138 1
6" Certa-Lok Spline	23347
8" Certa-Lok Spline	23368 15
10" Certa-Lok Spline*	23400 15
12" Certa-Lok Spline*	23510 15
8" Spline Insertion Tool	23540
10" & 12" Spline Insertion Tool	23540 1

Permanent Use "O"-Ring

Maximum compression, high disassembly effort. Lubricant required to assemble.

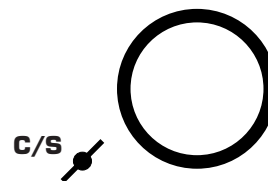


SIZE	MATERIAL	PRODUCT NUMBER
2"	IR	23043 1
3"	IR	23133 1
4"	IR	23238 01
6"	IR	23346 01
8"	IR	23368 1
10"	IR	23400 1
12"	IR	23510 1

IR–Polyisoprene Rubber

Non-Permanent Use "O"-Ring

Teflon coated for easy assembly. No lubricant required to assemble 2"–6".



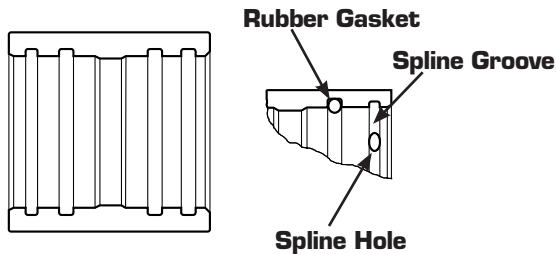
SIZE	MATERIAL	PRODUCT NUMBER
2"	NBR	23043
3"	NBR	23133
4"	NBR	23238
6"	NBR	23346
8"	IR	23368 1
10"	IR	23400 1
12"	IR	23510 1

NBR–Nitrile Butadiene Rubber
IR– Polyisoprene Rubber

Water, Sewer & Drain Fittings B-60

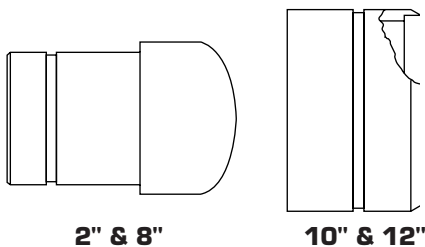
Restrained Joint PVC Pressure Fittings

Yelomine™ Couplings (With Splines and "O"-Rings)



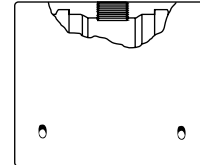
SIZE	PRESSURE RATING (psi)	NON-PERMANENT
2"	250	23042
3"	250	23132
4"	250	23237
6"	250	23345
8"	200	23368
10"	160	23400
12"	160	23510
SIZE	PRESSURE RATING (psi)	PERMANENT USE
2"	250	23042 05
3"	250	23132 05
4"	250	23237 05
6"	250	23345 05
8"	200	23368 05
10"	160	23400 05
12"	160	23510 03

Certa-Lok End Plug



SIZE (in.)	PRESSURE RATING (psi)	PRODUCT NUMBER
2	250	23084
3	250	23132 9
4	250	23288
6	250	23355
8	200	23368 9
10	160	23410
12	160	23520

Certa-Lok Tapped Couplings (C/L Female x C/L Female) (FIPT Outlet)

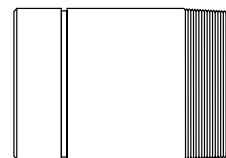


SIZE (in.)	OUTLET SIZE (in.)	PSI RATING (psi)	PRODUCT NUMBER	
			USE	
			NON-PERMANENT	PERMANENT
2 x 2	3/4	200	23052	23042 34
2 x 2	1	200	23042 35	23042 36
3 x 3	3/4	200	23132 32	23132 33
3 x 3	1	200	23132 34	23132 35
3 x 3	1 1/2	160	23132 36	23132 37
4 x 4	3/4	200	23373	23273 01
4 x 4	1	200	23373 02	23273 03
4 x 4	1 1/2	160	23373 04	23273 05
6 x 6	3/4	200	23323	23323 01
6 x 6	1	200	23323 02	23323 03
6 x 6	1 1/2	200	23323 04	23323 05
8 x 8	1	200	23368 44	23368 45
8 x 8	1 1/2	200	23368 46	23368 47
8 x 8	2	160	23368 48	23368 49
10 x 10	1 1/2	160	23400 42	23400 43
10 x 10	2	160	23400 44	23400 45
12 x 12	1 1/2	160	23510 42	23510 43
12 x 12	2	160	23510 44	23510 45

NOTE: Maximum outlet sizes are as shown above. Outlet sizes 1/2", 3/4", 1", 1 1/4" if not shown above are available on a special order basis only. Contact your local Team EJP sales office for price and availability.

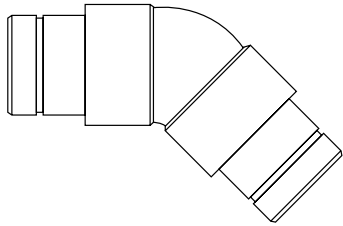
Certa-Lok Nipple

(C/L Male x Male Pipe Threads (NPT))



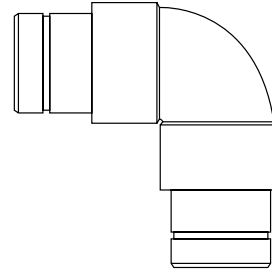
SIZE	PRESSURE RATING (psi)	PRODUCT NUMBER
2"	200	23011
3"	190	23102
4"	160	23277
6"	120	23351
8"	110	23368 18

Certa-Lok 45° Ells (C/L Male x C/L Male)



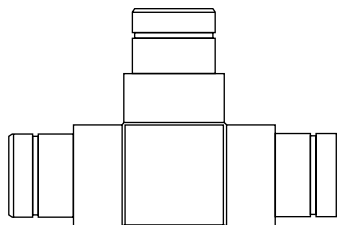
SIZE (in.)	PRESSURE RATING (psi)	PRODUCT NUMBER
2	160	23035
2	250	23035 1
3	160	23135 1
3	250	23135 2
4	250	23231 1
6	250	23313
8	200	23369 1
10	200	23405 1
12	200	23515 1

Certa-Lok 90° Ells (C/L Male x C/L Male)



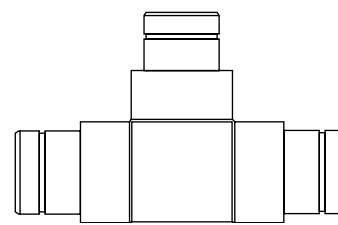
SIZE (in.)	PRESSURE RATING (psi)	PRODUCT NUMBER
2	160	23022
2	250	23022 1
3	160	23135 4
3	250	23135 5
4	250	23218
6	250	23305
8	200	23369 3
10	200	23405 3
12	200	23515 3

Certa-Lok Tee (C/L Male x C/L Male x C/L Male)



SIZE (in.)	PRESSURE RATING (psi)	PRODUCT NUMBER
2 x 2 x 2	160	23047
2 x 2 x 2	250	23047 1
3 x 3 x 3	160	23136
3 x 3 x 3	250	23136 1
4 x 4 x 4	250	23245
6 x 6 x 6	250	23320 1
8 x 8 x 8	250	23370
10 x 10 x 10	200	23407
12 x 12 x 12	200	23517

Certa-Lok Reducing Tee (C/L Male x C/L Male x C/L Male)

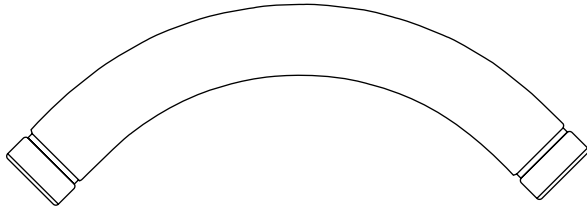


SIZE (in.)	PRESSURE RATING (psi)	PRODUCT NUMBER
3 x 3 x 2	250	23136 2
4 x 4 x 2	250	23268
4 x 4 x 3	250	23268 1
6 x 6 x 2	250	23336
6 x 6 x 3	250	23336 1
6 x 6 x 4	250	23334
8 x 8 x 6	200	23370 1

Water, Sewer & Drain Fittings B-62

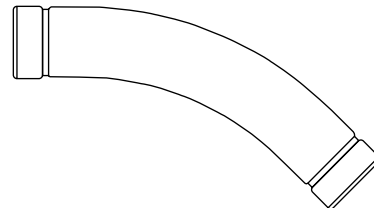
Restrained Joint PVC Pressure Fittings

Certa-Lok 90° Sweep Bend (C/L Male x C/L Male)



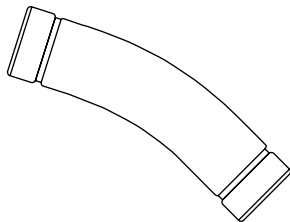
SIZE (in.)	PRESSURE RATING (psi)	PRODUCT NUMBER
2	250	23022 2
3	250	23135 6
4	250	23218 1
6	250	23305 1
8	200	23369 4
10	160	23405 4
12	160	23515 4

Certa-Lok 45° Sweep Bend (C/L Male x C/L Male)



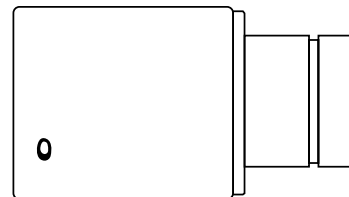
SIZE (in.)	PRESSURE RATING (psi)	PRODUCT NUMBER
2	250	23035 2
3	250	23135 3
4	250	23231 2
6	250	23313 1
8	200	23369 2
10	160	23405 2
12	160	23515 2

Certa-Lok 22½° Sweep Bend (C/L Male x C/L Male)



SIZE (in.)	PRESSURE RATING (psi)	PRODUCT NUMBER
2	250	23036
3	250	23135
4	250	23233
6	250	23315
8	200	23369
10	160	23405
12	160	23515

Certa-Lok Reducer (C/L Female x C/L Male)



SIZE (in.)	PSI	PRODUCT NUMBER	
		NON-PERMANENT USE	PERMANENT USE
4 × 2	250	23244 15	23244 20
4 × 3	250	23244	23244 1
6 × 2	250	23346 60	23346 61
6 × 4	250	23346 62	23346 63
8 × 2	200	23368 70	23368 71
8 × 4	200	23368 72	23368 73
8 × 6	200	23368 74	23368 75
10 × 8	160	23400 70	23400 71
12 × 8	160	23510 70	23510 71