

# Massachusetts Casting

## Watertight Manhole Frame & Cover

This is a watertight frame and cover to be used wherever there is a need for special precautions against water infiltration into a manhole.

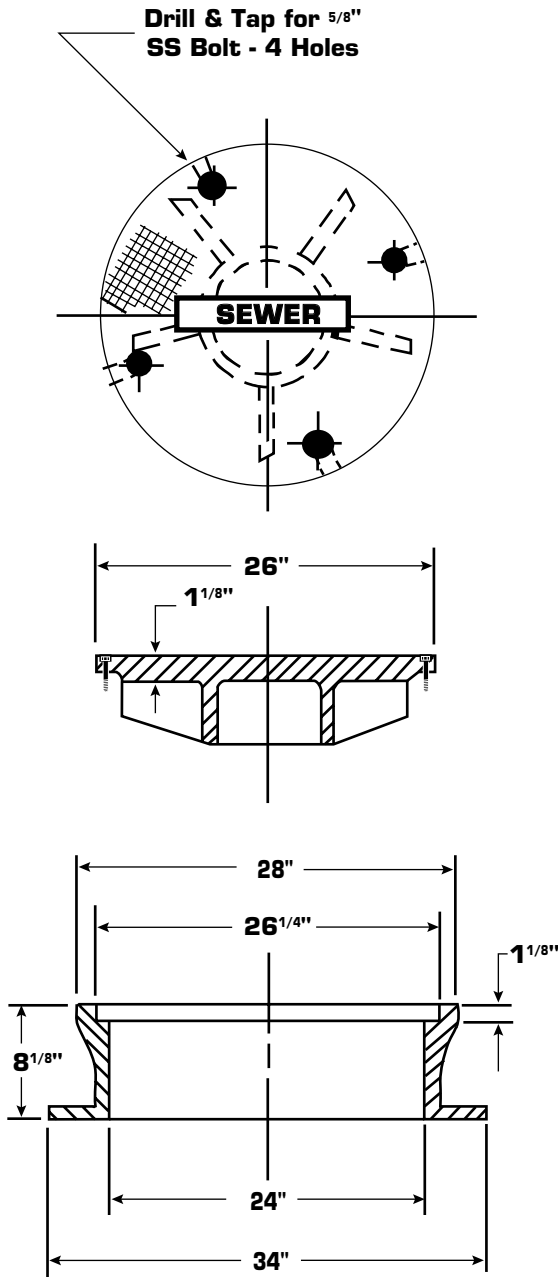
### Features:

- 3" lettering
- Covers available plain or marked SEWER, DRAIN, WATER or ELECTRIC
- Nonrocking cover

### Specifications:

- Watertight frame and cover
- Fully machined frame and cover
- A diamond pattern on the cover
- H-20 load rated
- Gray cast iron meets ASTM A48 Class 30
- Bolts are stainless steel. A 1/8" rubber gasket is used under the cover.
- Weight:

Frame & Cover.....475 lbs.



DESCRIPTION	PRODUCT NUMBER
QWP	
26" x 8" MH F&C WT Sewer	62061 1 600
LEBARON LBB268-3	
26" x 8" MH F&C WT Sewer	65089 1