

Flexible Couplings & Saddles K-4

PVC Inserta Tee®



Inserta Tee® is a three-piece service connection that is compression fit into the cored wall of the mainline or manhole. Inserta Tee® is easy to install and is used on all gravity flow pipe currently on the market. Inserta Tee® consists of a PVC Hub, Stainless Steel Band and Rubber Sleeve, for side services of 4" (100mm) through 12" (300mm) and fits all mainline diameters.

Features:

- **New and Rehab Installations:** Inserta Tee® allows easier grading of mainline and ensures side services are installed exactly where they need to be.
- **Tapping Existing Lines:** Install Inserta Tee® without disturbing the bedding while eliminating:
 1. Glues, epoxies, grout and specialized gaskets.
 2. Specialized tooling.
 3. Tightening & retightening bands.

Applications:

- Manholes
- Sanitary Sewers
- Storm Sewers
- Drainage
- Irrigation

Inserta Tee Can Be Used With These Pipes:

- Ductile Iron
- Concrete
- Clay
- Polyethylene
- PVC
- Perma Loc
- Fiberglass
- N12 Culvert
- Spirolite
- Vylon H.C.
- HIQ/Sur-Loc Culvert
- Ultra Rib

Installation Procedures:

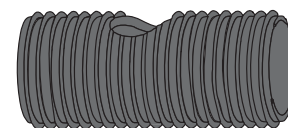
1. Make sure bit is perpendicular to mainline. Core the proper size hole. Feel inside hole and clear any remaining material.
2. Insert the rubber sleeve into the cored hole with the gold vertical line on the rubber sleeve facing to the side of the mainline. The upper segment should be on top of the wall or rib and the lower segment (PVC, Ribbed & Polyethylene pipe only) should be on the inside of the pipe. Feel inside to be sure lower segment is flat against inside wall.
3. Apply the Inserta Tee® solution supplied to the inside of the rubber sleeve and to the outside of the PVC hub adapter spigot. **WARNING!** Using pipe lube may result in Hub adapter popping out!

4. Place the PVC hub adapter into the rubber sleeve. Make sure that the red vertical line on the pvc hub adapter is in line with the gold vertical line on the rubber sleeve. Push hub adapter in as far as possible by hand. Make sure hub adapter is perpendicular to mainline. Forcing hub adapter through at an angle may cause damage to rubber sleeve or hub adapter.

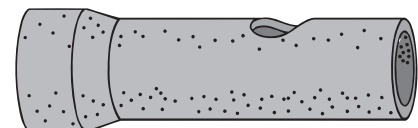


5. Place a 2 x 4 board onto the top of the PVC hub adapter.

6. The red horizontal line at the top of the hub adapter is a depth mark. This tells the installer just how far to drive the adapter into the rubber sleeve. Drive the PVC hub adapter into the rubber sleeve to where the horizontal red line on the PVC hub adapter meets the top of the rubber sleeve.



7. Place the stainless band around the top of the rubber sleeve and tighten down.



8. Install side-service pipe in normal manner.

NOTE: Inserta Tee® construction varies with pipe type and size. For pipe not listed please contact your local Team EJP Sales Office.