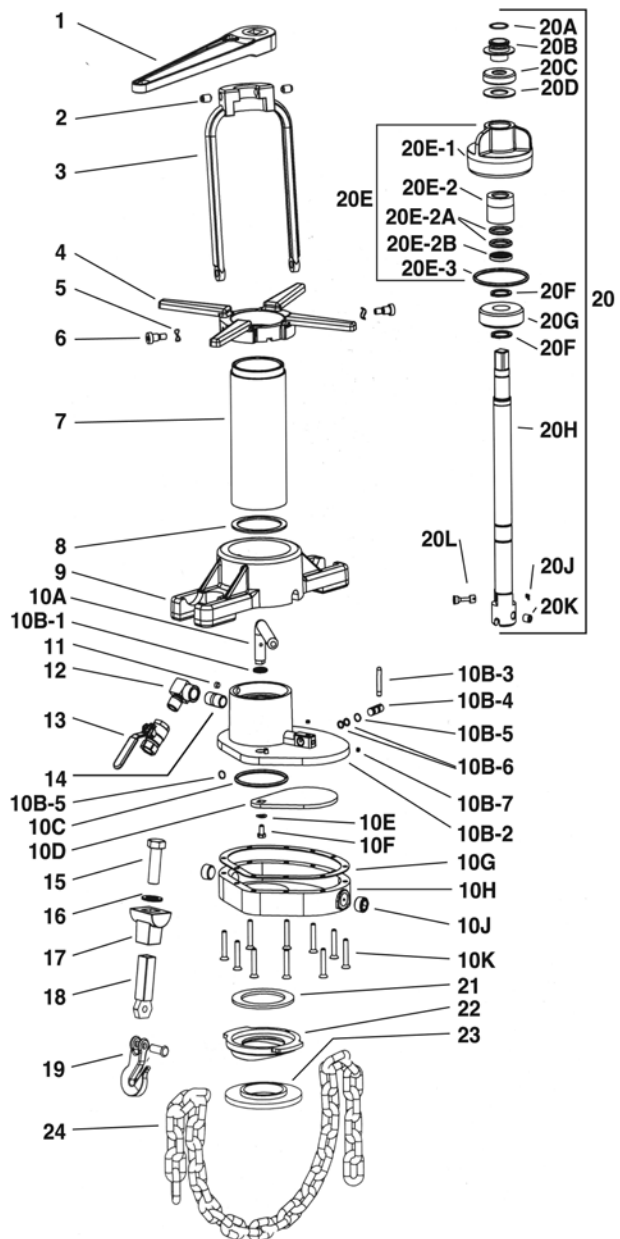


Tools & Equipment N-20

B-Too™ Drilling and Tapping Machine Parts

REF NO.	ITEM NO.	DESCRIPTION	PRODUCT NO.
1	356-19	Ratchet Wrench (1/16")	63527 32
2	356-06-02	Yoke Plunger, Vlier Std. (2 req'd)	63527 12
3	356-06	Yoke	63527 10
4	356-07	Feed Nut	63527 14
5	356-06-03	Yoke Bolt Washer (2 req'd)	63527 13
6	356-06-01	Yoke Bolt, 1/2" x 1/2" Socket (2 req'd)	63527 11
7	356-05	Barrel	63527 09
8	356-08-03	Gasket, Slide Gate to Barrel	63527 18
9	356-12	Clamp	63527 26
10	356-01A	Slide Gate Assembly	63527 71
10A	356-02	Slide Gate Disk Handle	63527 76
10B	356-03A	Slide Gate Top Assembly	63527 73
10B-1	356-02-01	Slide Gate Handle O-ring	63527 75
10B-2	356-03	Slide Gate Top	63527 74
10B-3	356-20-10	By-Pass Valve: 1/4" Spool Lever	63527 36
10B-4	356-20-1	By-Pass Valve: 1/4" Spool	63527 35
10B-5	356-20-09	By-Pass Valve: 1/4" Spool Retaining Ring (2 req'd)	63527 34
10B-6	356-20-08	By-Pass Valve: 1/4" Spool O-ring	63527 33
10B-7	356-03-01	Slide Gate Top Plug 1/8" NPT Plug (2 req'd)	63527 03
10C	356-04-01	Slide Gate Disk O-ring	63527 67
10D	356-04	Slide Gate Disk	63527 07
10E	356-04-03	Disk Handle Washer	63527 081
10F	356-04-04	Slide Gate Disk Screw	63527 08
10G	356-08-02	Gasket Slide Gate	63527 17
10H	356-01	Slide Gate Bottom	63527 72
10J	356-01-02	Slide Gate Bottom Plug (2 req'd) 1/4" NPT	63527 02
10K	356-03-05	Slide Gate Screw (10 req'd)	63527 06
11	356-03-03	Slide Gate Top to Barrel Set Screw	63527 05
12	356-03-04	Exhaust Elbow	63527 66
13	371-02	Exhaust Valve	63527 65
14	356-01-03	Slide Gate Pipe Nipple	63527 01
15	356-14-02	Swivel Bolt for Round Link Chain (2 req'd)	63527 28
16	8FW-Z12	Zinc Plated Washer 3/4" (2 req'd)	44640 2
17	356-15	Hook Holder (2 req'd)	63527 29
18	356-16	Hook Link (2 req'd)	63527 30
19	356-11-01	Round Link Chain Hook (2 req'd)	63527 25
20	356-10A	Holder Assembly	63527 235
20A	356-21	Spiral Snap Ring	63527 236
20B	356-17	Stop Collar	63527 31
20C	355-56	Thrust Bearing	63527 69
20D	356-18	Shaft Support Thrust Washer	63527 70
20E	356-08A	Cap Assembly	63527 155
20E-1	356-08	Cap Only	63527 15
20E-2	356-09A	Holder Bushing Assembly	63527 20
20E-2A	356-09-01	Holder Bushing O-ring (2 req'd)	63527 21
20E-2B	356-09-02	Holder Bushing Wiper	63527 22
20E-3	356-08-01	Cap O-ring	63527 16
20F	350-20-54	Shaft End Snap Ring (2 req'd)	63526 19
20G	356-13	Holder Guide	63527 27
20H	356-10	Holder	63527 23
20J	353-11-506	Holder Cotter Pin	63528 281
20K	353-11-514	Holder Socket Head Set Screw	63528 283
20L	353-11-505	Holder Knockout Pin	63528 280
21	356-08-04	Top Saddle Gasket	63527 19
22	356-23-xx	B-Too Saddle xx Mueller Style	Call for sizes
23	353-57-084	4" Bottom Saddle Gasket for 4" and larger	63528 272
	353-57-083	3" Bottom Saddle Gasket (not included)	63528 274
	353-57-082	2" Bottom Saddle Gasket (not included)	63528 273
24	356-11	Chain, Round Link	63527 24
	353-60-32	1/4" Hex Wrench	63528 288
	353-10-1	Tapping Compound	63527 64
Not Shown	356-61	Tool Box	63527 645

B-Too™ Drilling and Tapping Machine Parts Drawing & List



NOTE: One additional 4' length of chain is required for 18"-30" mains; 2 additional lengths for 32"-48".