

Water Meters and Accessories H-42

800-EJP-24 HR

Meter Yokes

Meter Yokes

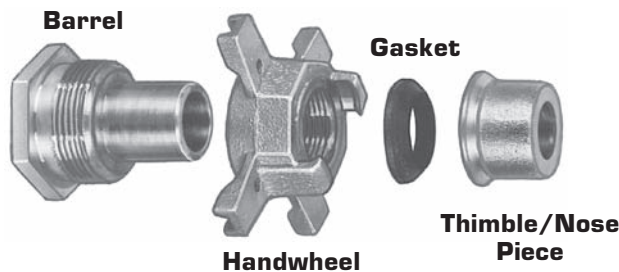
Meter Yokes provide a convenient and durable setting for water meters and make meter changeouts easier. They also provide substantial savings over meter couplings, valves, curb boxes and pipe fittings, which are eliminated in many cases.

Ford Meter Yokes offer the following advantages:

- **Stability** — yokes provide proper spacing and alignment to support the water meter and the water lines.
- **Accessibility** — meter changes with Ford Yokes are quick and trouble-free.
- **Versatility** — yokes include a variety of valve styles at either the inlet or outlet.
- **Security** — when a meter is removed from a yoke the Expansion Connection (see below) is removed with it, automatically sealing the service and preventing the unauthorized use of water.

The Expansion Connection

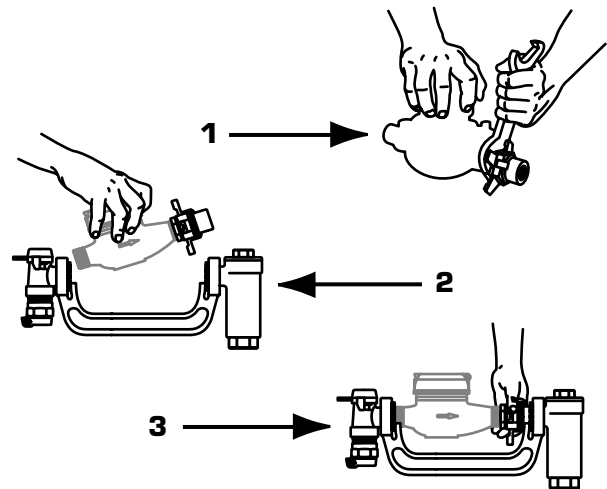
Every Yoke includes an Expansion Connection. Screwed onto one end of a meter, it expands by turning the handwheel to make compression joints dependably and permanently watertight against the fixed rubber gaskets in Yoke ends. When the connection is retracted, the meter is released and can be lifted out. Alignment and spacing of service lines is rigidly maintained by the cast iron Yoke piece.



Advantages

A three (3) piece Expansion Connection offers these important advantages over two (2) piece designs.

- The large tapered expansion gasket is impervious to the cutting action of sand and grit – “O” rings are not.
- The thimble/nose piece does not continue to rotate after making contact with the rubber yoke end gasket. Two (2) piece designs continue to rotate and may “walk out” of the yoke.
- Not all sizes of competitive expansion connections fit into EJP yokes. EJP Expansion Connections of a given size offer complete interchangeability with all other yokes.



METER INSTALLATION WITH EXPANSION CONNECTION

1. The Expansion Connection is tightened on the meter with an ordinary wrench. The combination thereby becomes an expandable unit which can be installed or removed in a matter of seconds.
2. The meter with connection attached is placed in the saddles of the Yoke and is aligned between the rubber gaskets in the ends of the Yoke.
3. Turning the handwheel of the Expansion Connection makes the meter watertight quickly and easily. No wrench is required in the meter pit for meter changing.

Water Meters and Accessories H-43

800-EJP-24 HR

Meter Yokes

Yoke Assembly

A complete Yoke Assembly consists of the four parts listed below. Order the individual parts from the product tables that follow to make a complete assembly.

A Complete Yoke Assembly Includes These Four Parts:

- Iron Yoke Piece
- Expansion Connection
- Inlet Valve or Ell*
- Outlet Valve, Check Valve or Ell *

* Ells and Angle Valves can be used on either end of a yoke. Angle Check Valves can only be used on the outlet.

Yoke Bars

Two styles of Yoke Bars readily available are the 500 Series which have removable brass end pieces and the 500P Series which have prongs for supporting the Yoke on pipe stakes when connected to plastic tubing.

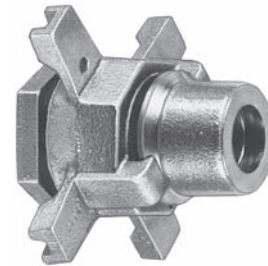


500 Series

500P Series

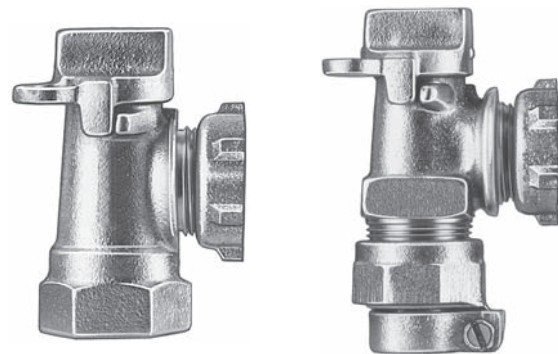
DESCRIPTION	METER SIZE	PRODUCT NUMBER
Yoke Bar Y501	5/8"	52487
Yoke Bar Y502	5/8" x 3/4"	52645
Yoke Bar Y503	3/4"	52776
Yoke Bar Y504	1"	53242
Yoke Bar w/Prongs Y501P	5/8"	52495
Yoke Bar w/Prongs Y502P	5/8" x 3/4"	52646
Yoke Bar w/Prongs Y503P	3/4"	52825
Yoke Bar w/Prongs Y504P	1"	53242 3

Expansion Connections



DESCRIPTION	METER SIZE	PRODUCT NUMBER
5/8" Expansion Connection	5/8"	52490
3/4" Expansion Connection	5/8" x 3/4" & 3/4"	52779 3
1" Expansion Connection	1"	53243 2

Angle Yoke Key Valves



With FIP Inlet

With Pack Joint Inlet

METER SIZE	INLET SIZE	PRODUCT NUMBER	
		FEMALE IRON PIPE	PACK JOINT *
5/8"	3/4"	52489	52488
5/8" x 3/4" & 3/4"	3/4"	52778 1	52777
1"	1"	53243 1	53243

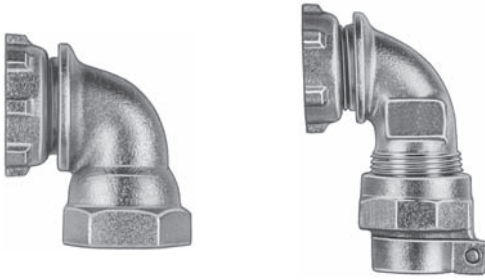
* Available in Grip Joint (GJ) connections for CTS.

Water Meters and Accessories H-44

800-EJP-24 HR

Meter Yokes & Accessories

Yoke Ells



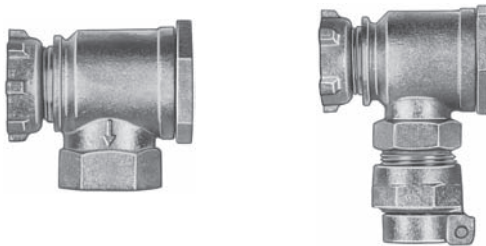
With FIP Inlet

With Pack Joint Inlet

METER SIZE	INLET SIZE	PRODUCT NUMBER	
		FEMALE IRON PIPE	PACK JOINT *
5/8"	3/4"	52490 1	52492
5/8" x 3/4" & 3/4"	3/4"	52779 2	52779 1
1"	1"	53241 1	53241

*Available in Grip Joint (GJ) connections for CTS.

Angle Check Valves



With FIP Inlet

With Pack Joint Inlet

METER SIZE	INLET SIZE	PRODUCT NUMBER	
		FEMALE IRON PIPE	PACK JOINT *
5/8"	3/4"	52486 3	52486 1
5/8" x 3/4" & 3/4"	3/4"	52776 3	52776 2
1"	1"	53242 2	NS

*Available in Grip Joint (GJ) connections for CTS.

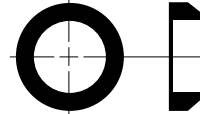
Yokes Gaskets & Accessories



Yoke End Gasket

This rubber gasket is used to seal on Yoke nose of Yoke valves and fittings.

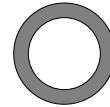
GASKET SIZE	METER SIZE	PRODUCT NUMBER
5/8"	5/8"	50092
3/4"	5/8" x 3/4" & 3/4"	50188
1"	1"	50201



Beveled Gaskets For Expansion Connection

This rubber gasket is placed between Expansion Connection thimble/nose piece and handwheel.

GASKET SIZE	METER SIZE	PRODUCT NUMBER
5/8"	5/8"	50091
3/4"	5/8" x 3/4" & 3/4"	50189
1"	1"	50199



Flat Gasket For Expansion Connections

This composition gasket is used in the female meter thread end of the Expansion Connection Body.

GASKET SIZE	METER SIZE	PRODUCT NUMBER
5/8"	5/8"	50093
3/4"	5/8" x 3/4" & 3/4"	50197
1"	1"	50202



Spanner Wrench For Lock Nuts

DESCRIPTION	PRODUCT NUMBER
Yoke Spanner Wrench	52487 1