

Valves and Tapping Sleeves C-34

Plastic Valves & Accessories

800-EJP-24 HR

Y-Globe Valve

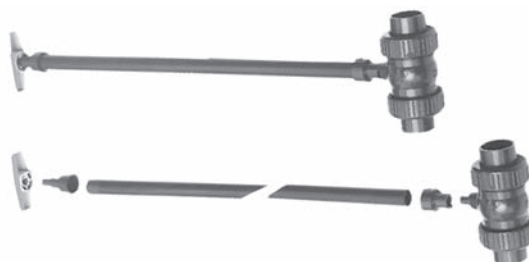


Type 301

The Y-Globe Type 301 valve is an angle seat valve of transparent PVC. It is used primarily for throttling purposes. The Y-Globe valve may be considered a general purpose flow control valve. It is generally faster to open and close than a gate valve. The seating surfaces are less subject to wear and their high pressure drop makes them useful in controlling pressures.

Valve Accessories

Ball Valve Handle



Type 615

The Type 615 Handle Extension set in PVC is intended for use with the 346 (Cartridge) ball valve and consists of two end pieces: a male spline x 3/4" socket, and a female spline x 3/4" socket. The assembly is completed by solvent welding both ends to a length of 3/4" PVC Schedule 80 pipe.

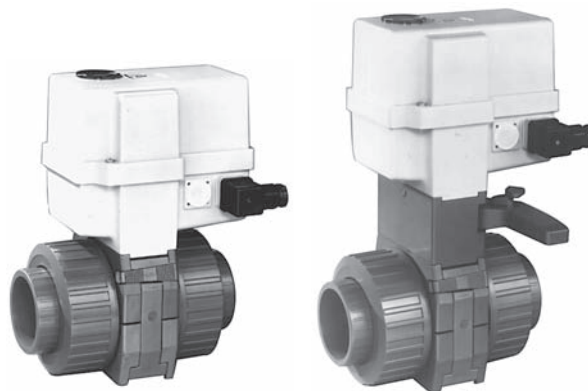
Butterfly Valve



Type 367

The Butterfly Valve Type 367 is designed for large nominal sizes of pipelines (2 1/2" thru 8"). Butterfly valves due to their design require minimum space for mounting. It is available in PVC, PP, and PVDF. The flow direction has no influence on the positioning of the valve. Available with lever handle or gear operator and electric or pneumatic actuators.

Electric Actuators



Without Manual Override

With Manual Override

Type 112 - 119

- Available with or without manual override.
- Additional control and regulating operations plus electrical feedback may be added by incorporating supplementary components.
- Actuators may be fitted onto existing ball valves.

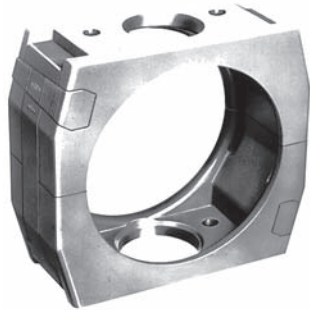
Valves and Tapping Sleeves C-35

800-EJP-24 HR

Accessories & Ordering Information

C

Ball Valve Bracket



Type 126

The ball valve mounting bracket Type 126 is designed for use with ball valves Types 346 and 343 (sizes $\frac{3}{8}$ " through 2"). Ball valve mounting brackets are of all PVC construction with no metal parts. Unique wedge design provides quick, easy assembly or disassembly without special tools.

Ball valve mounting brackets can be used to mount various actuators onto Type 346 and 343 ball valves or can also be used for panel mounting these valves.

Screen Assemblies



Type 050

The Type 050 screen assemblies can be used with the Type 360 ball check valve to assemble a foot valve. Material is PVC, without metal parts. Available in sizes $\frac{1}{2}$ " through 3".

Ordering Information

Ball Valves

Ball valves are available in sizes $\frac{3}{8}$ " through 6" with the following end configurations:

- Solvent weld socket
- FIP (female iron pipe) socket
- Flanged end

Sizes $\frac{3}{8}$ " through 4" are also available as true-union, with all the same end configurations. True union configurations allow the main valve body and all operating parts to be removed from the line and serviced without disturbing the pipeline and /or the permanent mounting ends.

Multiport Ball Valves

Multiport Ball Valves are available in sizes $\frac{3}{8}$ " through 2". They are true-union on-the-run with either solvent weld socket ends or FIP (female iron pipe) socket ends. The branch is solvent weld spigot end.

Ball Check Valves

Ball Check Valves are available in sizes $\frac{3}{8}$ " through 3" in solvent weld socket or FIP (female iron pipe) end configurations. All sizes are available as true union (single union is available on request).

Butterfly Valves

Butterfly valves are available in sizes 2 $\frac{1}{2}$ " through 8".

Available Valve Bodies

All the valves listed can be supplied in the following plastic materials:

- PVC
- CPVC
- PP
- PVDF

Available Seats and Seals

All valves can be supplied with the following seat and seal materials:

- PTFE
- EPDM
- FPM (Viton)

NOTES:

- There are many more valve types and end configurations available than shown here.
- There are many more accessories available than shown here.
- Please call your local EJP sales office for assistance in choosing the products to accurately meet your needs.