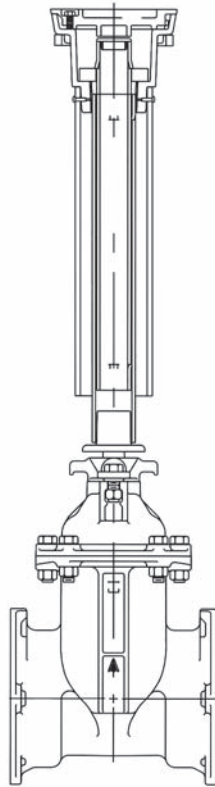


Valve and Service Boxes E-12

800-EJP-24 HR

Retrofit Valve Box Insert



The Retrofit Valve Box Insert upgrades an already installed standard cast iron valve box with the features of the AFC Trench Adapter. The Retrofit features a self-adjusting extension stem system that is available in trench depths ranging from 3 feet to 13 feet. This will eliminate forever the problem of trying to locate and engage the operating nut on the valve.

The Retrofit Valve Box Insert assures that the valve can be operated at ground level. All you have to do is remove the lid and the operating nut is accessible and ready to use.

A grit washer supports the extension stem in the top section of the valve box. The grit washer is designed to keep gravel and debris from entering the valve box interior.

Benefits

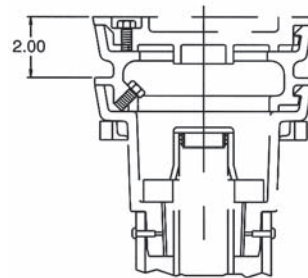
- Built in extension stem automatically adjusts to the same height as the valve box. Eliminates field cut extension stems.
- Operating nut will always be at groundline. Eliminates the need for long T-handle wrench.
- Keeps valve box “clean” from debris that could interfere with operation of the valve.

- Lid locks in place, reducing damage or injuries due to lids being loose or missing.
- Saves time in locating valve stem in emergency situations.
- Extension stem torque tested to 1,000 foot pounds.
- Valve box is sealed from mud, dirt and gravel.
- Risers available for height adjustment should there be a grade change.
- Fits any type of valve box.
- Installs in a matter of minutes.

Specifications

A valve box upgrade insert shall be one complete assembled unit composed of a high density polyethylene insert top, a self-adjusting extension stem made of galvanized square steel tubing, grit washer and locking lid. The valve box top section shall be adaptable to fit inside a standard valve box upper section. The extension stem assembly shall be of a telescoping design that allows for variable lengths. The extension stem must be torque tested to 1,000 foot pounds. Valve box inset shall be American Flow Control’s Retrofit Valve Box Insert or equal.

DESCRIPTION	LENGTH		WT. (lbs.)	PRODUCT NUMBER
	Min.	Max.		
#3A Retrofit VB Insert w/CI Lid	24.25	32.50	15	44993 2
#4A Retrofit VB Insert w/CI Lid	29.75	40.50	22	44994 2
#5A Retrofit VB Insert w/CI Lid	37.75	56.50	31	44995 2
#6A Retrofit VB Insert w/CI Lid	49.75	80.50	37	44996 2
#7A Retrofit VB Insert w/CI Lid	73.75	128.5	55	44997 2



Optional 2" Top Extension For Height Adjustment After Paving

Installation instructions are available from your local EJP sales office