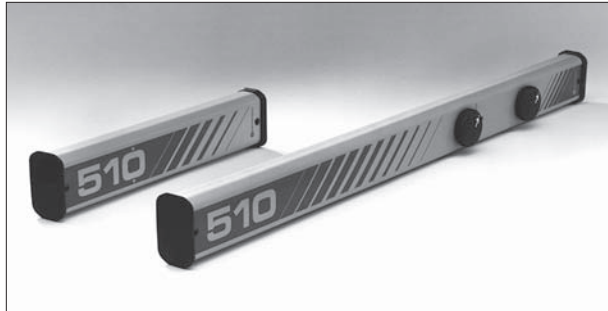


Locators N-3

800-EJP-24 HR

Pipe & Magnetic Locators

Model 510 Pipe & Cable Locator



Features:

- **Sleek, Lightweight Receiver** — for comfortable, upright locating
- **Peak and Null Operation** — for precise locating
- **Advanced Compression Circuitry** — provides crisp response in congested areas
- **High Efficiency Ferrite Antenna** — gets more power on the line
- **Crystal Control** — prevents frequency drift and maximizes receiver response
- **Narrow Band Antenna** — eliminates interfering frequencies

This sleek compact, Pipe and Cable Locator is an innovative, cost effective answer to the needs of general underground utility locating.

The lightweight (2 lbs.), 28" receiver can be held comfortably in one hand from an upright position. The signal strength meter is in line-of-sight and you can easily adjust the gain control with a finger or thumb. With a slight adjustment in instrument orientation you can switch from peak to null operating mode and pinpoint your conductor.

The Model 510 compression circuitry, crystal control and narrow band antenna features provide a clear, crisp receiver response, even in congested areas

Deceptively small, the 510 Transmitter operates in all standard locate modes — Direct Connect, Inductive Coupling and Induced Signal. A sealed jack is located at one end for connecting conductive attachments. This rugged, compact, one pound Transmitter easily fits into tight access areas.

An efficient ferrite antenna puts more concentrated power on your conductor. Graphics on the Receiver denote alignment for triangulation depth measurement. Both the Transmitter and the Receiver feature an automatic battery test on power up.

PRODUCT DESCRIPTION	PRODUCT NUMBER
510 Pipe & Cable Locator	60168

MAC-51BX Magnetic & Cable Locator



Lets you switch between HF & LF modes "on the fly"

Receiver/Transmitter Applications

With the cable locator function, underground telephone, utility and CATV cables, metallized warning tapes and ferrous/nonferrous pipes can be traced using inductive and/or conductive modes.

Receiver Only Applications

With the magnetic locator function, buried manhole covers, water meters, valves and valve boxes, corner markers, marker magnets etc. — any object that has a magnetic field — can be precisely located.

Accessories

Accessories supplied with the MAC-51BX include an earphone jack, a spare batteries holder and a conductive cable assembly with ground stake.

Features:

- Two active frequencies for pipe, cable and line tracing
- Passive operation for locating iron, steel or energized power lines
- Inductive and conductive signal coupling
- Extra heavy duty clips and cable
- Peak and null operation for precise locating
- Discrete sensitivity settings
- Supplied with 2, 9-volt lithium batteries
- Piezoelectric speaker
- 45° depth measurement
- Patented HeliFlux® Sensors
- Modular construction
- 3-year warranty

PRODUCT DESCRIPTION	PRODUCT NUMBER
MAC-51BX Mag. & Cable Locator	60145
MAC-51BX Inductive Clamp	60146

Options: MT-2 Transmitter is for non-metallic pipe.