

Valves and Tapping Sleeves C-20

Gate Valve & Butterfly Valve Accessories

Box Seat



The Box Seat is a high-strength, plastic device designed to eliminate the annoying and costly problem of having to re-dig a valve box base that has shifted off center during the backfilling process. The Box Seat is easily installed by removing the valve's operating nut and sliding it over the valve stem. When in place it automatically centers the valve box base around the operating nut and prevents the backfill material from interfering with valve operation while still allowing surface water to drain out. Any surface debris that does enter the valve box can quickly and easily be flushed out using air or water.

DESCRIPTION	PRODUCT NUMBER
Box Seat (QWP)	45158
Box Seat (Plain)	45158 P

Handwheel For 2" Square Nut

The Handwheel is made of ductile iron for strength. The set screw with cup point assures that the handwheel stays locked onto the operating nut. The size of the raised lettering is 1/2". The 2" square nut protrudes 3/4" above the handwheel top surface which provides the option of using a standard gate wrench. An optional 3/4" speed handle is available for valve exercising.



Handwheel Shown With Optional Speed Handle

Handwheel for 2" Square Operating Nut	O. D. SIZE	PRODUCT NUMBER
	10"	40830
	12"	40831
	14"	40832
	16"	40833
	20"	40834
24"	40836	
Revolving Speed Handle for Handwheel		40837

Gate Wrench Extension Stems

Each Extension Stem has a centering ring to keep it aligned in the valve box. It has a 2" heavy square socket on one end and a 2" heavy square nut on the other. Shafts are 1 1/4" Schedule 40 pipe. Optional cup point set screws are available on request.



Standard Fixed Operating Nut & Fixed Socket

Gate Wrench Extension Stems (fixed)	LENGTH (feet)	PRODUCT NUMBER
	1	63209
	2	63209 2
	3	63209 3
	4	63209 4
	5	63209 5
	6	63209 6
	7	63209 7
	8	63209 8
	9	63209 9
	10	63209 10
	11	63209 11
	12	63209 12

NOTE:

- Extension stems are also available in stainless steel.
- Gate Stem Extension bottom and top nuts are available to make your own extension stems.

Floor Stands



Non-Rising Stem with Indicator



Extra Heavy Geared Pattern, Non-Rising Stem with Indicator

NOTE: Ball thrust bearings and motor operated floor stands can be furnished when specified.

Stem Protectors

OS&Y valves installed in extremely dirty or corrosive atmosphere locations may be equipped with steel or clear plastic Stem Protectors to protect the stem threads.



Semi-Enclosed Style (enclosed style not shown)

Indicators

Needle and Slot Type

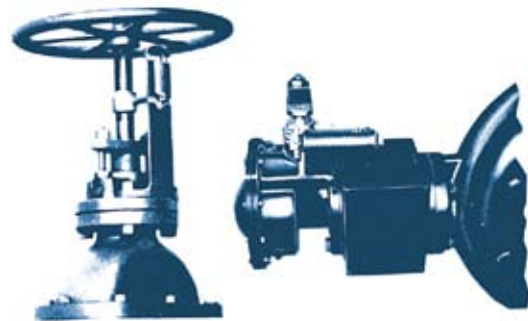
Needle and Slot or “Navy Type” Indicators are used on non-rising stem valves to indicate the exact position of the discs, whether “open,” “partly open” or “closed.” Indicator plates and needles are made of bronze with raised figures cast on plates to show the position of the discs.

These indicators can be furnished for all non-rising stem valves up to and including 24" size when specified.

Worm Gear Type

Worm Gear or “Barrel Type” Indicators can be furnished on non-rising stem valves equipped with gearing when specified.

The bronze indicating mechanism and traveling fingers indicate the position of the discs at all times.

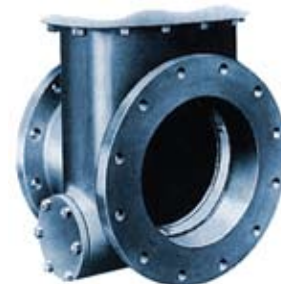


Needle and Slot Type

Worm Gear Type

Clean-Out Pockets

Clean-Out Pockets are available and are the “plate type” consisting of flat plate covers bolted to extensions on the valve bodies or bonnets.



Valves and Tapping Sleeves C-22

Gate Valve & Butterfly Valve Accessories

Extended Bonnet

Extended bonnets are used primarily for underground or submerged valves. This feature serves both as protection for the valve shaft extension and as an integral floor stand with the actuator mounted at the top of the extended bonnet. The actuator used in conjunction with an extended bonnet can be manual (handwheel), electric, or hydraulic or air cylinder. The purchaser must specify the length from centerline of the valve to the centerline of the actuator handwheel.



Motor Operators for Gate Valves and Butterfly Valves

Valves 4" and larger can be equipped with electric motor operating units. Motor operated valves are normally used in inaccessible or in hazardous locations, or where valves are operated on regularly timed cycles.

Cylinder Operators



Gate Valve with Commercial Cylinder

Gate valves requiring speedy or frequent operation or valves that are not easily accessible may be equipped with hydraulic or pneumatic cylinders. Cylinder operated valves are generally installed on lines where pressures are 150 lbs. per square inch or less. Where required, higher pressure cylinder operated valves are available.



Ground Level Indicator



Floor Box

NOTE: Please call your local Team EJP sales office for assistance in ordering Motor Operated Valves or any other accessory shown on C-20, 21 and 22.