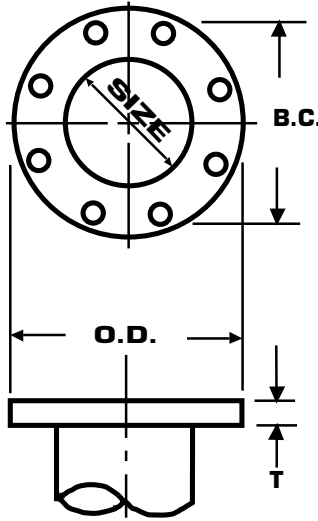
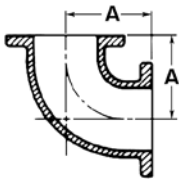


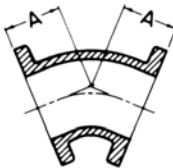
Ductile Iron Flanged Fittings



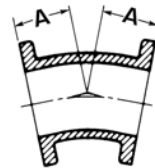
NOM. PIPE SIZE	JOINT DIMENSIONS (in inches)					
	FLANGE O.D.	DIA. OF BOLT CIRCLE	FLANGE THICKNESS	BOLT HOLE DIAMETER	NO. OF BOLTS	BOLT DIA. & LENGTH
2"	6.00	4.75	.62	.750	4	5/8 x 2 1/4
3"	7.50	6.00	.75	.750	4	5/8 x 2 1/2
4"	9.00	7.50	.94	.750	8	5/8 x 3
6"	11.00	9.50	1.00	.875	8	3/4 x 3 1/4
8"	13.50	11.75	1.12	.875	8	3/4 x 3 1/2
10"	16.00	14.25	1.19	1.000	12	7/8 x 3 3/4
12"	19.00	17.00	1.25	1.000	12	7/8 x 3 3/4
14"	21.00	18.75	1.38	1.125	12	1 x 4 1/2
16"	23.50	21.25	1.44	1.125	16	1 x 4 1/2
18"	25.00	22.75	1.56	1.250	16	1 1/8 x 5
20"	27.50	25.00	1.69	1.250	20	1 1/8 x 5
24"	32.00	29.50	1.88	1.375	20	1 1/4 x 5 1/2
30"	38.75	36.00	2.12	1.375	28	1 1/4 x 6 1/2
36"	46.00	42.75	2.38	1.625	32	1 1/2 x 7



1/4 Bend [90°]



1/8 Bend [45°]



1/16 Bend [22 1/2°]



1/32 Bend [11 1/4°]

PIPE SIZE	90° BEND			45° BEND			22 1/2° BEND			11 1/4° BEND		
	WT. (LBS.)	DIM. A	PRODUCT NUMBER	WT. (LBS.)	DIM. A	PRODUCT NUMBER	WT. (LBS.)	DIM. A	PRODUCT NUMBER	WT. (LBS.)	DIM. A	PRODUCT NUMBER
3"	25	5.5"	37165	20	3.0"	37180	20	3.0"	37185	20	3.0"	37190
4"	45	6.5"	37255	40	4.0"	37280	40	4.0"	37285	40	4.0"	37290
6"	65	8.0"	37370	55	5.0"	37395	55	5.0"	37400	55	5.0"	37405
8"	105	9.0"	37490	90	5.5"	37520	90	5.5"	37525	90	5.5"	37530
10"	165	11.0"	37635	130	6.5"	37655	135	6.5"	37600	135	6.5"	37665
12"	235	12.0"	37780	195	7.5"	37800	205	7.5"	37805	205	7.5"	37810
14"	330	14.0"	37849	245	7.5"	NS	250	7.5"	NS	255	7.5"	NS
16"	430	15.0"	37871	315	8.0"	37873	325	8.0"	NS	325	8.0"	NS
18"	530	16.5"	37887	375	8.5"	NS	385	8.5"	NS	385	8.5"	NS
20"	685	18.0"	37896	485	9.5"	37897	505	9.5"	NS	505	9.5"	NS
24"	1085	22.0"	37899	730	11.0"	NS	755	11.0"	NS	760	11.0"	NS

SHORT SPEC:

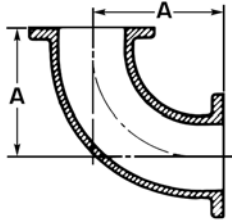
Flange fittings shall be ductile iron in accordance with ANSI/AWWA C110/A21.10 and 125# ANSI B16.1 faced and drilled. Fitting interior shall be cement lined and seal coated. The outside coating shall be red primer or bituminous coating.

NOTES:

- Base Tees and Reducing Run Tees are available by special order. Contact your local Team EJP sales office for price and availability.
- Flanged accessories must be ordered separately; See Pages B-34.

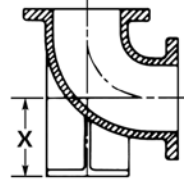
Water, Sewer & Drain Fittings B-28

Ductile Iron Flanged Fittings

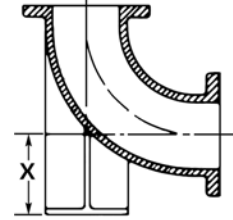


Long Radius ¼ Bend [90°]

SIZE	LONG RADIUS 90° BEND		
	WT. (LBS.)	DIMENSION A	PRODUCT NUMBER
3"	30	7.75"	37170
4"	50	9.00"	37260
6"	80	11.5"	37375
8"	140	14.0"	37495
10"	215	16.5"	37640
12"	325	19.0"	37785
14"	385	21.5"	NS
16"	505	24.0"	NS
18"	630	26.5"	NS
20"	810	29.0"	NS
24"	1240	34.0"	NS

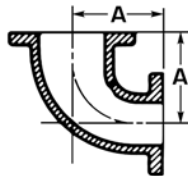


Base ¼ Bend [90°]



Long Radius Base ¼ Bend [90°]

SIZE	DIM. X	BASE 90° BEND		LR BASE 90° BEND	
		WT. (LBS.)	PRODUCT NUMBER	WT. (LBS.)	PRODUCT NUMBER
3"	4.88"	35	37166	48	37178
4"	5.50"	55	37274	73	37276
6"	7.00"	85	37390	120	37391
8"	8.38"	145	37510	205	37511
10"	9.75"	210	37650	295	37651
12"	11.25"	300	37795	435	37796
14"	12.50"	400	NS	580	NS
16"	13.75"	505	37874	740	NS
18"	15.00"	645	NS	995	NS
20"	16.00"	805	NS	1240	NS
24"	18.50"	1215	NS	1815	NS

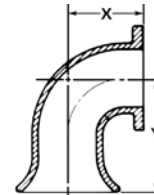


Reducing ¼ Bend [90°]

SIZE	REDUCING 90° BEND		
	WT. (LBS.)	DIMENSION A	PRODUCT NUMBER
4" x 3"	35	6.5"	37265
6" x 4"	55	8.0"	37380
8" x 4"	75	9.0"	37505
8" x 6"	90	9.0"	37500
10" x 6"	125	11.0"	37653
10" x 8"	150	11.0"	37652
12" x 6"	165	12.0"	37783
12" x 8"	190	12.0"	37782
12" x 10"	220	12.0"	37781

NOTE: Long Radius and Reducing 90° (regular and base) elbows are usually special order fittings; please contact your local Team EJP sales office for availability.

FOR FOREIGN FLANGE FITTINGS ADD 600D AFTER THE PRODUCT NO.

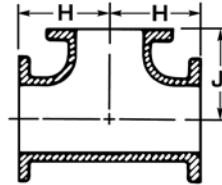


Flange x Flare 90° Bend

SIZE	WT (lbs.)	FLANGE X FLARE 90° BEND		PRODUCT NUMBER
		DIMENSIONS		
		X	Y	
3"	25	5.5"	8.5"	37175
4"	40	6.5"	9.5"	37270
6"	70	8.0"	12.0"	37385
8"	110	9.0"	13.0"	37515
10"	175	11.0"	15.0"	37645
12"	245	12.0"	16.0"	37790
14"	450	14.0"	22.0"	NS
16"	545	15.0"	23.0"	37872
18"	675	16.5"	24.5"	NS
20"	860	18.0"	26.0"	NS
24"	1195	22.0"	30.0"	NS

NOTE: Flange x Flare 90° Bends and Straight Pieces are used at the end of discharge lines or for wet wells and other areas where influent lines or force mains are discharging liquids. Flange x Flare Pieces are listed on B-33. Flange by Flare fittings are special order fittings.

Straight and Reducing Tees



SIZE	WT (lbs.)	DIMENSIONS		PRODUCT NUMBER	SIZE	WT (lbs.)	DIMENSIONS		PRODUCT NUMBER
		H	J				H	J	
3" x 3"	40	5.5"	5.5"	37155	16" x 10"	565	15"	15"	37870 1
4" x 3"	60	6.5"	6.5"	37235	16" x 12"	590	15"	15"	37868
4" x 4"	65	6.5"	6.5"	37230	16" x 14"	610	15"	15"	NS
6" x 3"	85	8"	8"	37347	16" x 16"	635	15"	15"	37867
6" x 4"	90	8"	8"	37345	18" x 6"	560	13"	15.5"	37889 1
6" x 6"	95	8"	8"	37340	18" x 8"	560	13"	15.5"	37889
8" x 3"	130	9"	9"	37457	18" x 10"	585	13"	15.5"	NS
8" x 4"	140	9"	9"	37455	18" x 12"	605	13"	15.5"	NS
8" x 6"	145	9"	9"	37450	18" x 14"	740	16.5"	16.5"	NS
8" x 8"	155	9"	9"	37445	18" x 16"	760	16.5"	16.5"	NS
10" x 4"	205	11"	11"	37600	18" x 18"	785	16.5"	16.5"	NS
10" x 6"	215	11"	11"	37595	20" x 6"	710	14"	17"	37900
10" x 8"	225	11"	11"	37590	20" x 8"	720	14"	17"	NS
10" x 10"	270	11"	11"	37585	20" x 10"	735	14"	17"	NS
12" x 4"	290	12"	12"	37735	20" x 12"	755	14"	17"	NS
12" x 6"	295	12"	12"	37730	20" x 14"	770	14"	17"	NS
12" x 8"	310	12"	12"	37725	20" x 16"	950	18"	18"	NS
12" x 10"	360	12"	12"	37720	20" x 18"	965	18"	18"	NS
12" x 12"	385	12"	12"	37715	20" x 20"	1005	18"	18"	NS
14" x 4"	400	14"	14"	NS	24" x 6"	1000	15"	19"	NS
14" x 6"	420	14"	14"	NS	24" x 8"	1010	15"	19"	NS
14" x 8"	435	14"	14"	NS	24" x 10"	1020	15"	19"	NS
14" x 10"	450	14"	14"	NS	24" x 12"	1040	15"	19"	NS
14" x 12"	470	14"	14"	NS	24" x 14"	1050	15"	19"	NS
14" x 14"	500	14"	14"	37856	24" x 16"	1070	15"	19"	NS
16" x 4"	525	15"	15"	37870 3	24" x 18"	1470	22"	22"	NS
16" x 6"	540	15"	15"	37869	24" x 20"	1510	22"	22"	NS
16" x 8"	555	15"	15"	37870	24" x 24"	1585	22"	22"	NS

SHORT SPEC:

Flange fittings shall be ductile iron in accordance with ANSI/AWWA C110/A21.10 and 125# ANSI B16.1 faced and drilled. Fitting interior shall be cement lined and seal coated. The outside coating shall be red primer or bituminous coating.

NOTE:

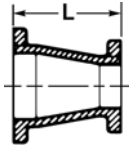
- Base Tees and Reducing Run Tees are available by special order. Contact your local Team EJP sales office for price and availability.
- Flanged accessories must be ordered separately; See Pages B-34.

FOR FOREIGN FLANGE FITTINGS ADD 600D AFTER THE PRODUCT NO.

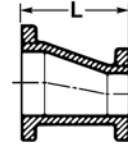
Water, Sewer & Drain Fittings B-30

Ductile Iron Flanged Fittings

Reducers



Concentric Reducer



Eccentric Reducer

SIZE	WT. (lbs.)	DIM. L	PRODUCT NUMBER		SIZE	WT. (lbs.)	DIM. L	PRODUCT NUMBER	
			CONCENTRIC REDUCER	ECCENTRIC REDUCER				CONCENTRIC REDUCER	ECCENTRIC REDUCER
4" x 3"	30	7"	37295	37300	16" x 10"	255	18"	37881	NS
6" x 3"	40	9"	37409	37417	16" x 12"	285	18"	37878	37879
6" x 4"	45	9"	37410	37415	16" x 14"	315	18"	37876 1	37876
8" x 3"	60	11"	37552	37557	18" x 8"	265	19"	NS	37890
8" x 4"	65	11"	37550	37555	18" x 10"	290	19"	37891	NS
8" x 6"	75	11"	37535	37541	18" x 12"	320	19"	NS	NS
10" x 4"	85	12"	37677	37687	18" x 14"	350	19"	NS	NS
10" x 6"	90	12"	37675	37685	18" x 16"	385	19"	NS	NS
10" x 8"	110	12"	37670	37680	20" x 10"	340	20"	NS	NS
12" x 4"	120	14"	37837	37842	20" x 12"	375	20"	37894	NS
12" x 6"	130	14"	37835	37840	20" x 14"	405	20"	NS	NS
12" x 8"	145	14"	37825	37830	20" x 16"	445	20"	NS	NS
12" x 10"	170	14"	37815	37820	20" x 18"	470	20"	NS	NS
14" x 6"	165	16"	NS	NS	24" x 10"	475	24"	NS	NS
14" x 8"	185	16"	37859	NS	24" x 12"	535	24"	NS	NS
14" x 10"	205	16"	37860	NS	24" x 14"	565	24"	NS	NS
14" x 12"	235	16"	37862	NS	24" x 16"	610	24"	NS	NS
16" x 6"	210	18"	NS	NS	24" x 18"	645	24"	NS	NS
16" x 8"	230	18"	NS	NS	24" x 20"	695	24"	NS	NS

NOTE:

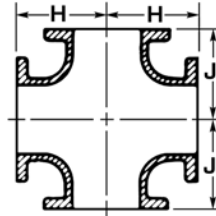
- NS fittings are non-stock but are available by special order. Please contact your local Team EJP sales office for availability.
- Flanged accessories must be ordered separately; See Pages B-34.

SHORT SPEC:

Flange fittings shall be ductile iron in accordance with ANSI/AWWA C110/A21.10 and 125# ANSI B16.1 faced and drilled. Fitting interior shall be cement lined and seal coated. The outside coating shall be red primer or bituminous coating.

FOR FOREIGN FLANGE FITTINGS ADD 600D AFTER THE PRODUCT No.

Straight and Reducing Crosses



SIZE	WT (lbs.)	DIMENSIONS		PRODUCT NUMBER	SIZE	WT (lbs.)	DIMENSIONS		PRODUCT NUMBER
		H	J				H	J	
3" x 3"	50	5.5"	5.5"	37160	16" x 12"	665	15"	15"	NS
4" x 3"	70	6.5"	6.5"	37242	16" x 14"	700	15"	15"	NS
4" x 4"	80	6.5"	6.5"	37240	16" x 16"	755	15"	15"	NS
6" x 3"	95	8"	8"	37353	18" x 6"	585	13"	15"	NS
6" x 4"	110	8"	8"	37352	18" x 8"	605	13"	15"	NS
6" x 6"	120	8"	8"	37350	18" x 10"	630	13"	15"	NS
8" x 3"	140	9"	9"	37468	18" x 12"	670	13"	15"	NS
8" x 4"	155	9"	9"	37467	18" x 14"	830	16.5"	16.5"	NS
8" x 6"	165	9"	9"	37465	18" x 16"	880	16.5"	16.5"	NS
8" x 8"	195	9"	9"	37460	18" x 18"	915	16.5"	16.5"	NS
10" x 4"	220	11"	11"	37617	20" x 6"	735	14"	17"	NS
10" x 6"	240	11"	11"	37615	20" x 8"	755	14"	17"	NS
10" x 8"	265	11"	11"	37610	20" x 10"	780	14"	17"	NS
10" x 10"	330	11"	11"	37605	20" x 12"	820	14"	17"	NS
12" x 4"	310	12"	12"	37757	20" x 14"	850	14"	17"	NS
12" x 6"	320	12"	12"	37755	20" x 16"	1065	18"	18"	NS
12" x 8"	345	12"	12"	37750	20" x 18"	1100	18"	18"	NS
12" x 10"	415	12"	12"	37745	20" x 20"	1175	18"	18"	NS
12" x 12"	460	12"	12"	37740	24" x 6"	1025	15"	19"	NS
14" x 6"	450	14"	14"	NS	24" x 8"	1045	15"	19"	NS
14" x 8"	475	14"	14"	NS	24" x 10"	1065	15"	19"	NS
14" x 10"	505	14"	14"	NS	24" x 12"	1100	15"	19"	NS
14" x 12"	555	14"	14"	NS	24" x 14"	1125	15"	19"	NS
14" x 14"	595	14"	14"	NS	24" x 16"	1160	15"	19"	NS
16" x 6"	565	15"	15"	NS	24" x 18"	1620	22"	22"	NS
16" x 8"	590	15"	15"	NS	24" x 20"	1695	22"	22"	NS
16" x 10"	620	15"	15"	NS	24" x 24"	1850	22"	22"	NS

SHORT SPEC:

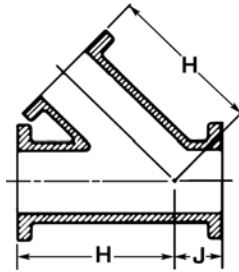
Flange fittings shall be ductile iron in accordance with ANSI/AWWA C110/A21.10 and 125# ANSI B16.1 faced and drilled. Fitting interior shall be cement lined and seal coated. The outside coating shall be red primer or bituminous coating.

NOTE:

- NS fittings are non-stock but are available by special order. Please contact your local Team EJP sales office for availability.
- Flanged accessories must be ordered separately; See Pages B-34.

FOR FOREIGN FLANGE FITTINGS ADD 600D AFTER THE PRODUCT No.

Straight and Reducing 45° Wyes



SIZE	WT (LBS.)	DIMENSIONS		PRODUCT NUMBER	SIZE	WT (LBS.)	DIMENSIONS		PRODUCT NUMBER
		H	J				H	J	
3" x 3"	45	10"	3"	37162	16" x 10"	715	30"	6.5"	NS
4" x 4"	75	12"	3"	37245	16" x 12"	755	30"	6.5"	NS
6" x 4"	105	14.5"	3.5"	37365	16" x 14"	800	30"	6.5"	NS
6" x 6"	115	14.5"	3.5"	37355	16" x 16"	850	30"	6.5"	NS
8" x 4"	165	17.5"	4.5"	37480	18" x 8"	820	32"	7"	NS
8" x 6"	175	17.5"	4.5"	37475	18" x 10"	855	32"	7"	NS
8" x 8"	200	17.5"	4.5"	37470	18" x 12"	895	32"	7"	NS
10" x 4"	240	20.5"	5"	37632	18" x 14"	940	32"	7"	NS
10" x 6"	250	20.5"	5"	37630	18" x 16"	990	32"	7"	NS
10" x 8"	275	20.5"	5"	37625	18" x 18"	1035	32"	7"	NS
10" x 10"	300	20.5"	5"	37620	20" x 10"	1095	35"	8"	NS
12" x 4"	355	24.5"	5.5"	37777	20" x 12"	1130	35"	8"	NS
12" x 6"	370	24.5"	5.5"	37775	20" x 14"	1170	35"	8"	NS
12" x 8"	395	24.5"	5.5"	37770	20" x 16"	1220	35"	8"	NS
12" x 10"	420	24.5"	5.5"	37765	20" x 18"	1270	35"	8"	NS
12" x 12"	460	24.5"	5.5"	37760	20" x 20"	1345	35"	8"	NS
14" x 6"	500	27"	6"	NS	24" x 12"	1550	40.5"	9"	NS
14" x 8"	525	27"	6"	NS	24" x 14"	1685	40.5"	9"	NS
14" x 10"	555	27"	6"	NS	24" x 16"	1740	40.5"	9"	NS
14" x 12"	600	27"	6"	NS	24" x 18"	1785	40.5"	9"	NS
14" x 14"	640	27"	6"	NS	24" x 20"	1860	40.5"	9"	NS
16" x 6"	655	30"	6.5"	NS	24" x 24"	2020	40.5"	9"	NS
16" x 8"	680	30"	6.5"	NS	—	—	—	—	—

NOTES:

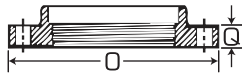
- NS fittings are non-stock but are available by special order. Please contact your local Team EJP sales office for availability.
- Flanged accessories must be ordered separately; See Pages B-34.

SHORT SPEC:

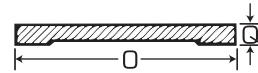
Flange fittings shall be ductile iron in accordance with ANSI/AWWA C110/A21.10 and 125# ANSI B16.1 faced and drilled. Fitting interior shall be cement lined and seal coated. The outside coating shall be red primer or bituminous coating.

FOR FOREIGN FLANGE FITTINGS ADD 600D AFTER THE
PRODUCT No.

CI Threaded Flanges

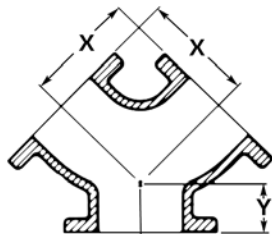


Blind Flanges



SIZE	DIMENSION (inches)		THREADED FLANGES				BLIND FLANGES			
	O	Q	FOR DUCTILE		FOR STEEL		SOLID		TAPPED 2"	
			WT (lbs.)	PRODUCT NUMBER	WT (lbs.)	PRODUCT NUMBER	WT (lbs.)	PRODUCT NUMBER	WT (lbs.)	PRODUCT NUMBER
3"	7.50	0.75	7	37140	7	37135	8	37145	8	37150
4"	9.00	0.94	12	37210	12	37205	14	37215	14	37220
6"	11.0	1.00	17	37325	17	37320	25	37330	25	37335
8"	13.5	1.12	28	37430	25	37425	40	37435	40	37440
10"	16.0	1.19	38	37570	35	37565	60	37575	60	37580
12"	19.0	1.25	58	37700	55	37695	80	37705	80	37710
14"	21.0	1.38	75	NS	—	—	110	NS	110	NS
16"	23.5	1.44	95	37885	—	—	145	37880	145	NS
18"	25.0	1.56	105	NS	—	—	190	37892 1	190	NS
20"	27.5	1.69	135	NS	—	—	250	37900 1	250	NS
24"	32.0	1.88	160	NS	—	—	370	NS	370	NS

True Wyes

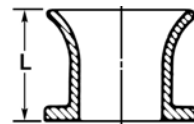


SIZE	WT (lbs.)	DIMENSIONS		PRODUCT NUMBER
		X	Y	
4 x 4"	50	6.5"	3.0"	37250
6" x 4"	75	8.0"	3.5"	37362
6" x 6"	80	8.0"	3.5"	37360
8" x 6"	120	9.0"	4.5"	37487
8" x 8"	125	9.0"	4.5"	37485

NOTE: Flanged True Wyes are normally non-stock. Call your local Team EJP sales office for price and availability.

FOR FOREIGN FLANGE FITTINGS ADD 600D AFTER THE PRODUCT No.

Flange x Flare Piece



SIZE	FLANGE X FLARE PC STR. CL		
	WT. (lbs.)	DIM. L	PRODUCT NUMBER
3"	20	8.0"	37200
4"	30	8.0"	37310
6"	40	8.0"	37420
8"	70	10.0"	37560
10"	95	10.0"	37690
12"	155	12.0"	37845
14"	225	12.0"	NS
16"	330	16.0"	NS
18"	355	16.0"	NS
20"	460	18.0"	NS
24"	635	18.0"	NS

NOTES:

- NS fittings are non-stock but are available by special order.
- Tapped Flanges are available with other size taps.