

# Manhole Castings L-23

# Midwest Castings Ohio

## 1000 Frame & Cover

### Features:

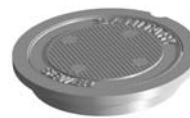
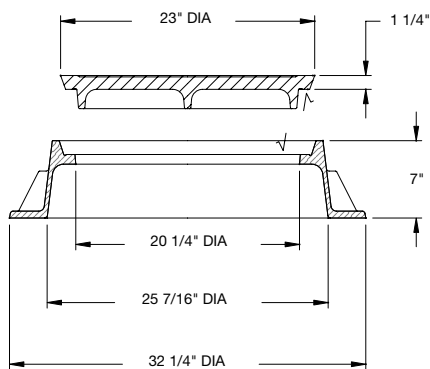
- Heavy Duty
- Machined Bearing Surfaces

### Options:

- Solid or Vented Covers
- Special Lettered Covers
- Adjusting Rings
- Type E Outer Cover and Type F 8" Dia. Inner Cover
- Classic Logo Covers
- Watertite Assembly
- Gasket Seal Covers

All 1000 covers and grates can be used with the following frames.

TABLE OF ASSEMBLED WEIGHTS						
CAT. NO.	COVER	GRATE TYPE			BASE FLANGE DIA. (in.)	FRAME HGT. (in.)
	TYPE A, B OR C (lbs.)	M FLAT (lbs.)	N OVAL (lbs.)	01 BEEHIVE (lbs.)		
1000	300	250	255	260	32 1/4	7
1010	440	390	395	400	32 1/4	7
1070	365	315	320	325	32 1/4	7



**Type A Solid Cover**  
1 1/2" dia. flat bosses on cover face



**Type M Radial Flat Grate**  
Approx. 140 Sq. In. of opening



**Type B Vented Cover**  
20 - 1/4" diameter holes



**Type N Oval Grate**  
Approx. 115 sq. in. of opening, height above frame 2 1/4", Trout Image, "Dump No Waste!" lettering



**Type C Vented Cover**  
2 - 1" diameter holes



**Type 01 Beehive Grate**  
Approx. 140 sq. in. of opening, Height above frame 5 1/4", Trout Image, "Dump No Waste" lettering

- Type 02 Beehive Grate 7" height above frame
- Type 03 Beehive Grate 9" height above frame

## 1010 Frame & Cover

### Features:

- Heavy Duty
- Machined Bearing Surfaces
- Accepts 1000 covers and grates

### Options:

- Watertite Assembly
- Adjusting Rings
- Gasket Seal Covers

